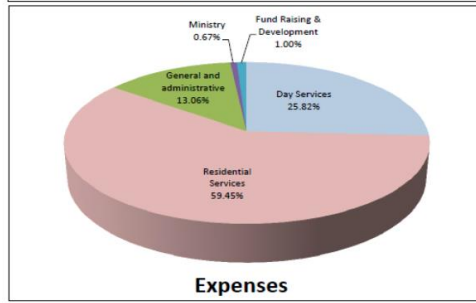
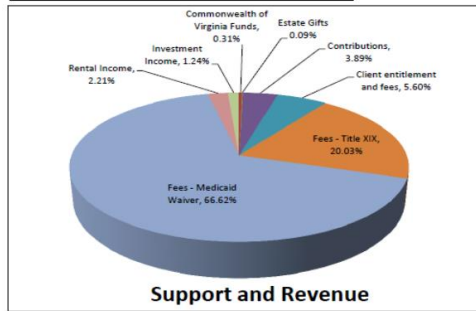


Celebrating 48 Years Supporting

People with Disabilities

Balance Sheets		FINANCIAL SUMMARY	
Year Ended June 30, 2018		Statement of Revenues & Expenses	
Year Ended June 30, 2018		Year Ended June 30, 2018	
Assets			
Current Assets			
Cash and cash equivalents	2,665,382	Commonwealth of Virginia Funds	30,400
Investments	3,149,968	Estate Gifts	9,000
Accounts receivable	1,017,930	Contributions	376,237
Prepaid expenses	26,379	Client entitlement and fees	541,883
Escrow accounts	56,814	Fees - Title XIX	1,936,984
Total Current Assets	6,916,473	Fees - Medicaid Waiver	6,442,216
		Rental Income	213,990
		Investment Income	119,709
		Total Support and Revenue	9,670,419
Fixed Assets			
Tools and outside equipment	36,564	Expenses	
Vehicles	986,162	Day Services	2,237,798
Appliances, furniture and fixtures	758,394	Residential Services	5,152,893
Land, building and improvements	6,900,250	General and administrative	1,131,877
	8,681,370	Ministry	57,815
		Fund Raising & Development	86,728
Less: Accumulated depreciation	4,558,762	Total Expenses	8,667,111
Total Fixed Assets	4,122,608	Changes in Net Assets	
			1,043,513
Other Assets	58,325	Net Assets of Beginning of Year	
			8,690,478
Total Assets	11,097,406	Net Assets at End of Year	
			9,733,991
Liabilities and Net Assets			
Current Liabilities			
Short-term debt	224,260	Commonwealth of Virginia Funds, 0.31%	
Accounts payable	461,120	Investment Income, 1.24%	
Accrued wages	17,460	Rental Income, 2.21%	
Current portion of long-term debt	90,777	Estate Gifts, 0.09%	
Other current liabilities	29,259	Contributions, 3.89%	
Total Current Liabilities	822,876	Client entitlement and fees, 5.60%	
Long Term Debt		Fees - Title XIX, 20.03%	
Notes payable net of current portion	540,539	Fees - Medicaid Waiver, 66.62%	
Total Liabilities	1,363,415		
Net Assets			
Unrestricted-Undesignated	9,005,272	Ministry, 0.67%	
Temporarily restricted	382,580	Fund Raising & Development, 1.00%	
Permanently restricted	346,139	General and administrative, 13.06%	
Total Net Assets	9,733,991	Day Services, 25.82%	
Total Liabilities and Net Assets	11,097,406	Residential Services, 59.45%	



The Great Community Give: A Great Opportunity

Pleasant View is excited to participate in the second annual Great Community Give Wednesday April 17, 2019 from 6:30 AM to 8 PM, an initiative of the Community Foundation.



Last year, the giving day was a great way to share our mission within our community. Pleasant

View staff members and individuals we support helped promote and contributed in any way they could. Aktion Club members and Community Connections teams helped decorate Pleasant View vehicles to promote the giving day and thank the community. A small group also went to the Community Foundation offices for a live Facebook interview and picture. Through our efforts, Pleasant View was exposed to a broader audience of caring community members with an interest in philanthropy.

Pleasant View is attempting to win a "Power Hour" prize this year. You can contribute anytime during the Great Community Give event, but if you donate to Pleasant View between the hours of 1 PM and 2 PM you can help us win "Power Hour" prize. You can donate as little as \$10 to increase our chance to win additional prize money. Multiple gifts from the same person only count as one gift. Last year, we started the day with a goal to raise \$2,000. We ended the day with a net of \$3,725 in donations plus a \$1,500 "Power Hour" prize. This year our goal is to raise \$4,000 to further our mission. ●



Faith and Light

AN INTERNATIONAL CHRISTIAN ASSOCIATION WITH PEOPLE WITH INTELLECTUAL DISABILITIES, THEIR PARENTS, AND FRIENDS

We meet 7pm the first (Broadway) and third (Harrisonburg) Fridays during the school year. See summer schedule online.



Calendar can be found at www.pleasantviewinc.org/newsevents.html

OR Facebook Events: @pleasantviewinc

Pleasant View's Fall Banquet

We thank everyone who was able to attend the 2018 Fall Banquet this year. Three pairs of presenters shared their experiences from last summer's Faith and Light retreat. Thank you also for contributing \$22,000 to further our mission.



We invite community members to come to our monthly Faith and Light Services in Harrisonburg and Broadway and expand your spiritual family. You are also invited to attend the Faith and Light retreat May 31 to June 2, 2019. Contact Dave Gullman at (540) 433-0965 for more information. ●

Spotswood Garden Club Donation

November 6, 2018 was exciting for everyone at Pleasant View's Harrisonburg Day Support Services (HDSS) this year. The Spotswood Garden Club was there to witness the completion of their HDSS beautification Project. The club donated and coordinated the planting of 6 trees in the HDSS court yard, and 8 trees and flowering bushes in the front yard. Spotswood Garden Club contracted with Rodamer's Landscaping and Shreckhise Shrubbery for the plants and installation. ●



Thank-you for your support.

The Pleasant View, Inc. is committed to insuring that no person is excluded from participation in, or denied the benefits of its transit services on the basis of race, color or national origin, as protected by Title VI of the Civil Rights Act of 1964. For additional information on Pleasant View's nondiscrimination policies and procedures, or to file a complaint, please visit the website at <http://www.pleasantviewinc.org/civilrights.html> or contact Emily Bowman, Social Worker and Accessibility Committee Chairperson, PO Box 426, Broadway, VA 22815-0426, email: ebowman@pleasantviewinc.org, phone: 540-433-8960 between 9-5pm M-F, or Fax: 540-433-0483