

Celebrating 45 Years Supporting

Balance Sheets

Year Ended June 30, 2015

Assets

Current Assets

Cash and cash equivalents	\$	640,075
Investments		1,732,166
Accounts receivable		868,132
Prepaid expenses		33,691
Escrow accounts		59,969
Total Current Assets	\$	3,334,033

Fixed Assets

Tools and outside equipment	\$	36,564
Vehicles		891,759
Appliances, furniture and fixtures		802,672
Land, building and improvements		6,476,293
	\$	8,207,288

Less: Accumulated depreciation 4,062,378

Total Fixed Assets \$ 4,144,910

Other Assets

Loan costs	\$	37,421
	\$	37,421

Total Assets \$ 7,516,364

Liabilities and Net Assets

Current Liabilities

Accounts payable	\$	104,365
Accrued wages		354,711
Accrued payroll withholdings		5,619
Current portion of long-term debt		193,923
Short Term Debt		250,864
Other current liabilities		32,979
Total Current Liabilities	\$	942,461

Long Term Debt

Notes payable net of current portion	\$	960,595
--------------------------------------	----	---------

Total Liabilities \$ 1,903,056

Net Assets

Unrestricted-Undesignated	\$	5,094,542
Temporarily restricted		313,356
Permanently restricted		205,410
Total Net Assets	\$	5,613,308

Total Liabilities and Net Assets \$ 7,516,364

Financial Summary

Statement of Revenues & Expenses

Year Ended June 30, 2015

Support and Revenue

Commonwealth of Virginia Funds	\$	63,360
Contributions		220,884
Client entitlement and fees		518,888
Fees - Title XIX		1,834,638
Fees - Medicaid Waiver		5,968,548
Rental Income		218,239
Investment Income		7,536
Total Support and Revenue	\$	8,832,093

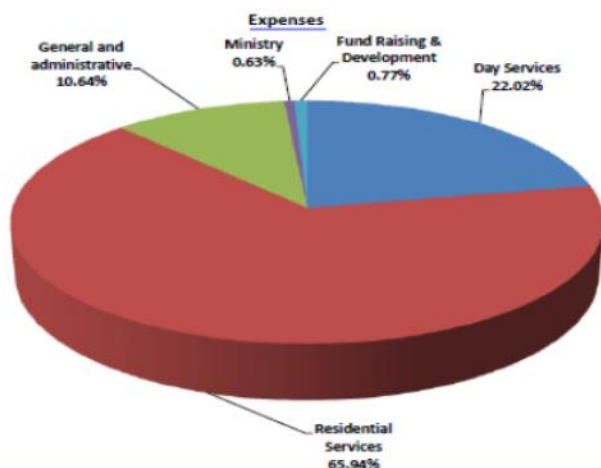
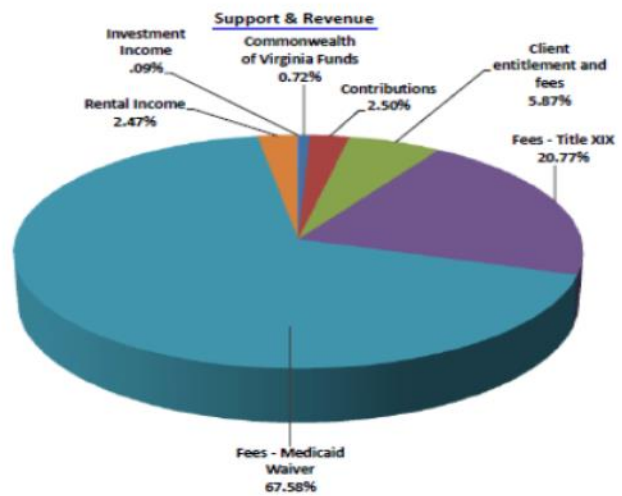
Expenses

Day Services	\$	1,860,834
Residential Services		5,573,520
General and administrative		899,845
Ministry		52,941
Fund Raising & Development		65,423
Total Expenses	\$	8,452,563

Changes in Net Assets \$ 379,463

Net Assets of Beginning of Year \$ 5,233,845

Net Assets at End of Year \$ 5,613,308



Thank-you for your support.