



Pleasant Views

Pleasant View, Inc. 2021 Annual Report Edition

Letter from the President of Pleasant View's Board of Directors:

In FY 2021 we began our 50th Anniversary celebrations. It was a year of transition, assessment, and strategic focus towards enhancing quality. We welcomed Executive Director Kevin Paluszak as we honored the accomplishments and retirement of Executive Director Nancy Hopkins-Garriss, Residential Director Jane Sellers, and Human Resources Director Tamra Puffenbarger.

Our proactive approach was aimed at ensuring quality of care for the individuals and quality of life for all at Pleasant View. We invested in technology platforms to improve communication, assist with quality assurance, and streamline processes. We continued to replace computers with a goal of investing in Electronic Health Records in the near future. Furthermore, an interdisciplinary committee faced the difficult challenges of the pandemic and ongoing nationwide DSP staffing crisis and made proactive decisions to right-size programs and services to further enhance quality.

The board is deeply grateful for all those who have supported Pleasant View this past year. Your support and our ongoing commitment to quality will ensure individuals with disabilities can live, work, and thrive with an active life in the community. We appreciate the stability you provide to help us make the necessary changes to strengthen services for individuals with disabilities in our community.



Sincerely,
Elroy Miller
President,
PVI Board of Directors

Mission: Pleasant View supports individuals who have disabilities in living out their goals for meaningful work, relationships, and spiritual development.
Vision: All people will have the opportunity to live in and enrich their communities.

Together Again: Sharing the Story of Jesus

Pastor Derek Yoder

We enjoy stories. In December and early January, we were thinking a lot about the Christmas story at the Harrisonburg Day Program. We began with the angel's visit to Mary, and Mary and Joseph's journey to Bethlehem, which culminated in the holy birth of Jesus. Then after Christmas, we heard about the visits of the shepherds and the magi to see Jesus. (Together Again page 3)

Pastor Derek sharing the story of Jesus with day program participants



Some of Our Recent Blessings...

- PVI Board Member Kendal Swartzentruber, brought his JMU class to go Christmas Caroling at all Pleasant View Houses. The carolers included Christmas classics and took requests from all who participated. Plush gifts



Carolers at Lee High

were donated by a member of Lindale Mennonite Church and shared with each person who wanted one. The weather was cold that night, but the mood was joyful, warm, and cozy.

- Lex enjoyed helping to decorate the Day Program with the many beautiful poinsettias donated to us by Frank Vetting. We had white, pink and red poinsettias to add to our festive decorations (Blessings page 3)



Lex with poinsettia

Thank you for your support.

FINANCIAL SUMMARY

Balance Sheets
Year Ended June 30, 2021

ASSETS

CURRENT ASSETS

Cash and cash equivalents	\$ 5,332,967
Accounts receivable	976,512
Prepaid expenses	32,561
Total Current Assets	\$ 6,342,040

FIXED ASSETS (Property and Equipment)

Tools and outside equipment	\$ 36,564
Vehicles	1,233,450
Appliances, furniture and fixtures	780,116
Land, buildings and improvements	6,825,732
Buildings and improvements not in service	-
Less: Accumulated depreciation	(5,299,436)
Total Fixed Assets	\$ 3,576,426

OTHER ASSETS

Investments	\$ 4,260,872
Other	58,325
Total Other Assets	\$ 4,319,197

TOTAL ASSETS \$ 14,237,663

LIABILITIES AND NET ASSETS

CURRENT LIABILITIES

Current portion of long-term debt	\$ 22,576
Accrued wages	455,028
Deferred revenue	166,719
Accounts payable	64,271
Payroll taxes payable	21,196
Other current liabilities	44,592
Total Current Liabilities	\$ 774,382

LONG-TERM DEBT, net of current portion \$ 204,891

TOTAL LIABILITIES \$ 979,273

NET ASSETS

Without donor restrictions	\$ 12,267,313
With donor restrictions	991,078
Total Net Assets	\$ 13,258,391

TOTAL LIABILITIES AND NET ASSETS \$ 14,237,664

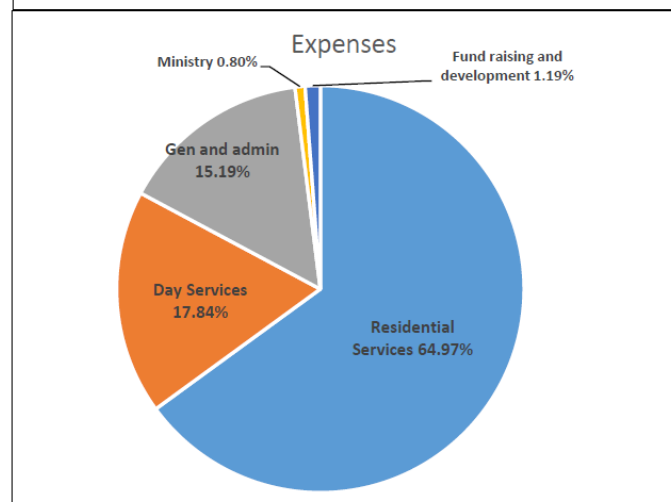
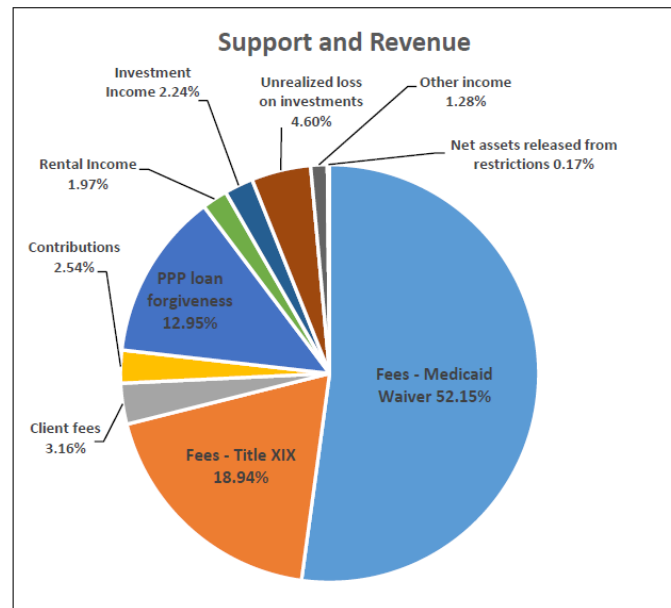
Statements of Support and Revenue & Expenses
Year Ended June 30, 2021

SUPPORT AND REVENUE WITHOUT DONOR RESTRICTIONS

Fees - Medicaid Waiver	\$ 5,061,682
Fees - Title XIX	1,838,085
Client fees	306,839
Contributions	246,767
PPP loan forgiveness	1,256,400
Rent Income	191,641
Investment Income	216,990
Unrealized loss on investments	446,221
Other income	124,239
Net assets released from restrictions	16,800
Total Revenue and Support	\$ 9,705,664

EXPENSES

Residential Services	\$ 4,950,185
Day services	1,359,596
General and administrative	1,157,521
Ministry	60,967
Fund raising and development	90,905
Total expenses	\$ 7,619,174



Disability Awareness/Acceptance Rally

To celebrate Disability Awareness and promote Disability Acceptance, Pleasant View is having a rally on court square March 22, 2022 from 1PM to 2PM. We invite you to come out, show your support, and listen to what is important to our community members who have intellectual and developmental disabilities. More information can be found at our website www.pleasantviewinc.org or email Pam Miller pmiller@pleasantviewinc.org ●



Rally participants in 2019

The Great Community Give: Quality of Life For All

The pandemic continues to affect the way we provide community-based supports to individuals who have developmental disabilities. We continue to evaluate, adapt, and evolve our service delivery.

Pleasant View is participating in the fifth annual Great Community Give Wednesday, April 20, 2022 from 6:30 AM to 8 PM, an initiative of the Community Foundation. Participating in the Great Community Give (GCG) is another way to share our mission within the community. **Our goal is to raise \$25,000.**



Steve in front of Lee High

Our initiatives to promote **Quality of Life For All** include supporting accessible means of transportation. Pleasant View is applying for two accessible vehicles through the FTA 5310 grant which requires a 20% community match. Your donations to the Great Community Give will pay the \$14,000 community match for a 9-passenger van with lift. The remaining \$11,000 or more raised will be used for accessibility projects in our residential and day programs.

If you want to be a peer-to-peer fundraiser for Pleasant View, you can email pmiller@pleasantviewinc.org or go to donate.greatcommunitygive.org/organizations/pleasant-view-inc . Please help spread the word by telling your friends and family. ●

Thank you for your support!

(Together Again continued) Joy was palpable throughout December. For me, that joy seemed most present in the small reunions happening around the day program. Pleasant View houses were slowly getting back together. Covid numbers had decreased enough that we felt comfortable all gathering together in one place. It was so good to feel community love again.

And then the Omicron spike came in January. Suddenly, storytelling moved back online. Although houses are still coming to the day program (as I write this in late January), they are separated again. Community feels more distant as the pandemic continues to threaten us.

When I reflect on God's story—the incarnation, the faithfulness of Mary and Joseph, the proclamation of the angels, the worship of the shepherds and the magi, and the flight to Egypt—I see that God's story also contains both joy and pain. God's story encompasses all of the emotions that we are



Pastor Derek (right) sharing the story of Jesus

also feeling. And we trust that God will meet us in our circumstances, no matter how we arrive. This has been my comfort and hope: that each person in the Pleasant View community will find God at work as we tell these stories.

May you also find God in all the corners of life this year. Keep us always in your prayers, because we experience all of the highs and lows of any community. We give thanks to God for the Spirit at work among us, and for your love. Amen. ●

(Blessings Continued)

- Individuals at Pleasant View are blessed each Christmas by generous people such as our friends at Rotary Club of Broadway-Timberville (right), friends from Independent Community Church, Cargill, Special Olympics Area 4, and community members delivering gifts, food, or designating donations for something special. ●



Rotary Club of Broadway-Timberville with presents for Pleasant View

Do you like to golf?



Join us and help individuals who have intellectual and developmental disabilities live in and enrich their communities.



Pleasant View's 25th Annual Charity Golf Tournament Friday, May 20, 2022

at
Spotswood Country Club

<http://pleasantviewinc.org/newsevents.html>

Over the last 25 years, generous sponsors and golfers like you, have raised over \$412,306.00 to provide day and residential supports for individuals with intellectual and developmental disabilities! Last year we raised over \$14,000.00. We need your help to keep improving and moving forward.

Gather your teams, register early, and prepare to have fun.

- Format: Captain's Choice
- Registration begins at 8:00AM, with a shotgun start at 9:10AM.
- Please register by May 5, 2022 either online registration through PayPal \$118/golfer or \$450/team of 4 (see above link) **OR** avoid fees by paying by check (\$115/golfer or \$440/team).

Sponsorships Available:

Contact Pam Miller at (540) 560-1134 or
pmiller@pleasantviewinc.org

for sponsorship opportunities and more information.

UPCOMING EVENTS

Pleasant View, Inc. activities are listed on our website: www.pleasantviewinc.org & Facebook @pleasantviewinc

1st Thursday of the Month is a Pleasant View Fundraiser at Broadway, Harrisonburg Burgess Rd and Miller's Circle, and Bridgewater Domino's Pizza Restaurants. We receive a % of the daily total.

March

- **Developmental Disability Awareness/Acceptance Rally** Tuesday, March 22, 2022 (Rain date March 29th)
- **Friendship Walk Meet-up** (Purcell Park) Thursday, March 17, 2022 at 4:30PM **St. Patrick's Day**

April

- **Great Community Give**



Wednesday,
April 20, 2022

from 6:30AM to 8PM. All of our online donation buttons on Facebook and website will be rerouted to the Pleasant View Great Community Give Profile.

<https://donate.greatcommunitygive.org/organizations/pleasant-view-inc>

- **Dance & Outdoor Game Party** at Harrisonburg Day Support Services, 151 Commerce Drive, 22802 Wednesday April 20, 2022 from 1PM to 3PM.
- **Friendship Walk Meet-up** (Rockingham Park) Thursday, April 21, 2022 at 6PM

May

- **Friendship Walk Meet-up** (Hillendale Park) May 12, 2022 at 1:30PM.
- **Golf Tournament** (Information on Left)
- **Friendship Walk Meet-up** (Storybook Trail) Thursday, May 26, 2022 at 1:30PM.

(540) 896-8255
P.O. Box 426, Broadway, VA 22815



Non-Profit Org.
U.S. Postage
Paid
New Market, VA 22844
Permit #7