

# PLEASANT VIEWS

## Saying Farewell to Peggy Secrist: Day Support and Employment Services Director

We humbly announce the retirement of our Director of Day and Employment Services, Peggy Secrist. In Peggy's 42 years she has not just helped Pleasant View pioneer programs for individuals who have developmental disabilities, but has left a lasting foundation and legacy to forge forward in the years to come.



Watkins, Peggy, Genny, and Jerry

### Some of her professional highlights include:

- Provided oversight to programs supporting hundreds of individuals over the course of her career
- Served as a mentor, leader, and role model for hundreds of staff members
- In 1988, helped facilitate the introduction and trial of supported employment curriculum
- Helped develop Pleasant View's Community Connections in 1994
- Became Director of Day and Employment Services in 1997
- In 1999, helped establish Pleasant View as a DARS vendor for employment services
- Led Pleasant View to CARF accreditation in 2002 and has led the continued accreditation for nearly 20 years.
- In 2006, aided in leading the transition to current facility for Harrisonburg Day Support Services.
- Helped develop Community Engagement and Community Coaching services
- Provided oversight of modified services and virtual supports in the midst of the pandemic.

**Join us in honoring her work, legacy, and spirit of dedication to those we serve. ●**

## Program Spotlight: Turner House

From 259 Broadway, VA, if you turn right onto Spar Mine Rd, you will see Pleasant View's first group home now named Turner House up on the hill to your left. This home in Timberville, VA, is a two story farmhouse where 6 people currently live.



Amy, Robin, Carrie, and Garland

Several individuals who live at Turner House recently transitioned from attending day supports at-home to attending the Harrisonburg Day Program. They are enjoying seeing friends they haven't seen in a while and trying new activities. Everyone came home last week with Halloween Crafts to help decorate their homes. Two individuals work in Quicksburg, VA, at Shen-Paco Industries.

"Turner" cont. on page 2

## Spotlight Follow-up: Brenneman House

As stated in our summer newsletter, Brenneman House is a single story 4-bedroom, three bath (two are en-suite baths) home in Battlefield Estates. To increase the home's accessibility, we began renovations to one of the two en-suite bathrooms in September. The bathroom, pictured right, had space, beautiful tile, a deep garden tub, and small stand-up shower. However it did not meet the physical needs of the individuals we support.

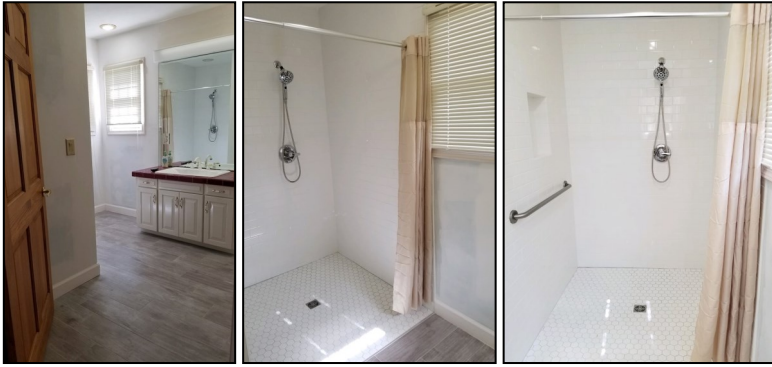


Brenneman House Bath (BEFORE)

"Brenneman" cont. page 2

# Fall 2021

# Supporting Individuals with



Brenneman House Bath (After)

## “Brenneman” Continued:

Now, the footprint of the bathroom has changed. It is still spacious and has beautiful tile, but includes a large shower that can be used by an individual who uses a wheelchair or an individual who is ambulatory and can stand. There is also room in the shower for a bench, if needed.

Since we are working on a second bathroom at Brenneman House, we are waiting to paint when they are both ready, but this bathroom is useable and in complete working order now. We will keep you up to date on the progress. Thank you for supporting these changes with your donations. After the Spring/Summer newsletter, we received several donations designated to the remodeling of Brenneman. ●

## “Turner” Continued:

Turner House is a home like yours and mine much of the time but each person requires assistance. Each person receives help finding activities they enjoy, preparing their favorite foods, and meeting personal goals. Direct Support Professionals help individuals with their personal care, medication, and treatment needs. Some days are also spent getting groceries, cleaning, providing accessible transportation within the community, and supporting individuals during doctor and other appointments.

Once a month a group of long-time friends from Timberville’s Cargill (left), organized by Michele Biller, spend the evening at Turner House. They usually bring dinner,



Timberville’s Cargill (left), organized by Michele Biller, spend the evening at Turner House. They usually bring dinner,

provide entertainment, socialize, and bring special treats for everyone. These evenings are special and highly anticipated. Together they celebrate birthdays and holidays any way they can. Michele also submitted the group’s volunteer hours to Cargill for an employee volunteer and giving incentive contest. She won 2 prizes and was able to inspire a total Cargill donation of \$1,500 for Turner House. This relationship has been wonderful for all involved.

Turner House, an older two-story farmhouse, however, does have some limitations and accessibility challenges to keep in mind for the future. When two individuals required accommodations for their new wider walkers, Pleasant View was able to build a wide concrete ramp with railings from the dining room door to the driveway. However, the challenge of having one bathroom for four people living on the main floor is more difficult to fix. Thank you for supporting our programs so we can continue to make improvements where we can that benefit the individuals we serve. ●

## Drive-Thru Trunk-or-Treat



Of course after last year we hoped that we would be back and enjoying in-person parties, but the risk is still too great. We would like to thank our social work department and volunteers for helping us have some Halloween fun. ●



**Our Mission:** Pleasant View supports individuals who have disabilities in living out their goals for meaningful work, relationships and spiritual development.



# Intellectual Disabilities Since 1971



As Pleasant View embraces the path ahead it remains rooted and established in the same mission, vision, and faith-based operating principles that have shaped its 50-year history of empowering others for success.

Pleasant View is excited to stand firm on the following operating principles:

- **Promote independence while maintaining a sense of community.**
- **Operate with good will, believing that everyone is working for positive, person-centered outcomes for the agency and each other.**
- **Creatively lead in the disabilities field.**
- **Engage in innovation and quality improvement practices.**
- **Operate as a quality non-profit agency while maintaining a strong financial base.**
- **Provide services that honor individuals and their well-being.**

John Ruskin once shared: **“Quality is never an accident, it is always the result of intelligent efforts.”** With this reality, and the commitment Pleasant View has to its operating principles, Pleasant View is navigating the process of strengthening the quality of its programs and services. In the course of affirming our commitment to quality, the challenge to strengthening is to downsize and restructure some of the programs and services provided by Pleasant View.

Programs will close, some temporarily, some permanently, and this will impact the lives of individuals, families, staff, and stakeholders within our community. But the commitment to what is best and to quality is what drives the mission, vision, and decisions Pleasant View is making. In the wake of a pandemic and the current economy, employment market, and industry staffing crisis, we acknowledge the need to transform for the best of all. Sadly, this includes recognizing that we may not be what is best for all that we support.

As Pleasant View moves forward, Supportive Employment, Day Programs in the Harrisonburg area, and Community Engagement services will continue. Congregate supports in residential settings will be in Broadway (Turner House, Louk House, and Lee High) as well as the Harrisonburg area (Harrison House ICF, Brenneman House, and Moyers Apartments). Additionally, Pleasant View will be offering community based and less restrictive supports such as Community Engagement, Supported Living, and In Home Supports.

Wanting and ensuring what is best might be difficult, but it is the moral, ethical, and just thing to do. It is keeping true to our mission, our vision, our principles and our faith-based foundation by not looking at ourselves but at what’s best for all. It’s simply, why Pleasant View was founded, why it exists, and how it will continue to operate. As you, me, we, Pleasant View, and the world forge forward in the days, months, and years to come: **look for and be committed to more, quality of life is for all.**

With hope for quality in all of life,

K. Paluszak, MA  
Executive Director  
Pleasant View, Inc.

## Upcoming Events

- **Fall Virtual Banquet:** November 18, 2021 at 7PM. Join us at [www.tinyurl.com/PVIVideos](http://www.tinyurl.com/PVIVideos) (Our YouTube channel) to watch “Anticipating the Future: Quality of Life For All.” If you aren’t able to watch with us that night, you can watch it at your leisure and catch up with what we are doing at Pleasant View.
- **Giving Tuesday:** Tuesday November 30, 2021. You can donate through our Giving Tuesday Facebook Event or through PayPal by using our **Donate Now** button on our website ([www.pleasantviewinc.org](http://www.pleasantviewinc.org)).
- **Great Community Give:** Wednesday, April 20, 2022 We would love for you to donate, but you can also help us reach more people to make this an even more successful year. Let Pam Miller know ([pmiller@pleasantviewinc.org](mailto:pmiller@pleasantviewinc.org) or 540-560-1134) if you would like to help spread the word.
- **Pleasant View Golf Tournament:** Friday, May 20, 2022 Gather your teams now and register on our website at anytime.

<http://pleasantviewinc.org/newsevents.html>

The Fall Banquet, Golf Tournament, and Great Community Give have been our three most important fundraisers. Thank you for including Pleasant View in your individual giving, estate, and congregational giving plans. As we reorganize and right-size our programs, your donations will help us to move forward and provide quality opportunities for the individuals we support.

**Thank you!**

## How Can You Help, Aside From Donations?

- Come to **work at Pleasant View** and/or share our need for Direct Support Professionals and LPN’s with those you know. Head to our Career Page ([www.workatpv.com](http://www.workatpv.com)) where you can download an application or apply on Indeed through links. For questions, call Molly at (540) 896-8255
- We need **friends looking for relationships** who would like to connect and get to know individuals who live at Pleasant View (PVI). If you go to church with someone at PVI, you could offer to give them a ride or sit with them at Church. Do you like to sing or play music? You could plan an evening sing-a-long or accompany your new friend to a community event.

## Proclamation

On September 8, 2021, Delegate Tony Wilt met with our leadership team. He presented Pleasant View with a proclamation recognizing our 50



Year Anniversary and accomplishments. Come to the Broadway office on Spar Mine RD to see the proclamation in person. We appreciated having a chance to talk with Mr. Wilt and his Legislative Aid, Chad Funkhouser, about matters that affect the individuals we support. ●