



Pleasant Views

Pleasant View, Inc. 2020 Annual Report Edition

Letter from the President of Pleasant View's Board of Directors:

Fiscal Year 2020, started strong. Our day supports were expanding. We were awarded a Harrisonburg Community Development Block Grant to purchase a vehicle to use in our growing Supported Employment and Community Connections Programs. We were meeting with BLUELINE to address facility upgrades needed for growth. We continued to make upgrades in our technology in order to remain HIPAA compliant and to provide better, more informed care.

In January of 2020, Pleasant View accepted Nancy Hopkins-Garriss' one-year notice of resignation in preparation for her well-deserved retirement. Our search committee started the search for Nancy's successor aided by the Mennonite Health Services. In the midst of the search, in March, the world was overcome by the COVID-19 pandemic. Pleasant View's in-person day services were suspended, but were later able to be offered at home. We were able to keep our doors open and reassign our day support staff members to residential programs with no loss of jobs. We continued to live out our vision, mission, and values despite the limitations of the latter part of the year.

Pleasant View continues to be a strong organization. Our services make community living possible for individuals who have disabilities. Individuals we support don't only live in, but work and thrive in their communities.



Sincerely,
Jonathan Anderson
President,
PVI Board of Directors

Mission: Pleasant View supports individuals who have disabilities in living out their goals for meaningful work, relationships, and spiritual development.

Vision: All people will have the opportunity to live in and enrich their communities.

Determined to Share Our Virtual Reality

Pleasant View's Banquet was very different this year. Even though we desperately wanted to have fellowship



in person, we felt that creating a virtual experience was the responsible way to keep the individuals we support and community members who support us safe. That being said, we wanted to keep in touch with

the community, and the individuals we support wanted to be a part of the solution.

We developed a plan for our virtual banquet which included a mission story, worship team music, and celebrating accomplishments. We were able to reach 363 people over the past three months (Banquet page 3)

This fall, Pleasant View day support staff organized our first ever Trunk-or-Treat for the residential programs and community members. It was fun to dress-up and see each other, even from afar.

Pictured from left to right, Jon, Melany, and Dave. More pictures are on www.facebook.com/pleasantviewinc ●



Our residential programs ushered in the new year with hopes for normalcy.

Pictured to the left are Dennis, Phylcia, and Lindsay from Gehman House celebrating with noisemakers and festive hats. Welcome to 2021 and new beginnings. ●

Celebrating 50 Years Supporting

Balance Sheets Year Ended June 30, 2020

ASSETS

CURRENT ASSETS

Cash and cash equivalents	\$ 5,477,673
Accounts receivable	791,094
Prepaid expenses	33,189
Total Current Assets	\$ 6,301,956

FIXED ASSETS (Property and Equipment)

Tools and outside equipment	\$ 36,564
Vehicles	1,213,450
Appliances, furniture and fixtures	763,019
Land, buildings and improvements	6,779,281
Buildings and improvements not in service	-

Less: Accumulated depreciation	(5,016,901)
Total Fixed Assets	\$ 3,775,413

OTHER ASSETS

Investments	\$ 3,158,654
Escrow accounts	-
Other	58,325
Total Other Assets	\$ 3,216,979

TOTAL ASSETS

\$ 13,294,348

LIABILITIES AND NET ASSETS

CURRENT LIABILITIES

SBA paycheck protection program loan	\$ 1,256,400
Accrued wages	531,547
Current portion of long-term debt	100,747
Short-term debt	64,225
Accounts payable	46,148
Payroll taxes payable	21,639
Other current liabilities	102,401
Total Current Liabilities	\$ 2,123,107

LONG-TERM DEBT, net of current portion \$ 227,294

TOTAL LIABILITIES

\$ 2,350,401

NET ASSETS

Without donor restrictions	\$ 10,180,821
With donor restrictions	763,126
Total Net Assets	\$ 10,943,947

TOTAL LIABILITIES AND NET ASSETS

\$ 13,294,348

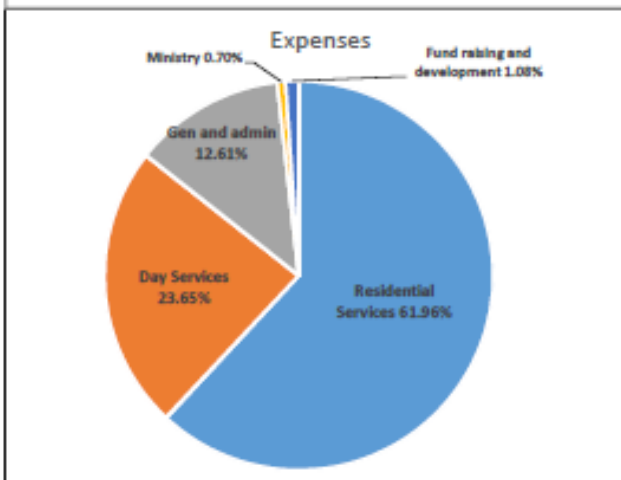
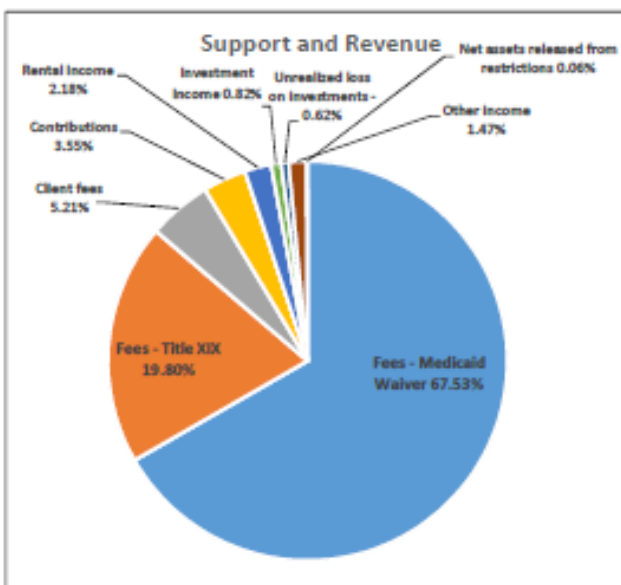
Statements of Support and Revenue & Expenses Year Ended June 30, 2020

SUPPORT AND REVENUE WITHOUT DONOR RESTRICTIONS

Fees - Medicaid Waiver	\$ 6,342,030
Fees - Title XIX	1,859,237
Client fees	489,105
Contributions	333,352
Rent Income	204,701
Investment Income	76,779
Unrealized loss on investments	(58,297)
Other income	138,513
Net assets released from restrictions	5,699
Total Revenue and Support	\$ 9,391,119

EXPENSES

Residential Services	\$ 5,509,489
Day services	2,102,447
General and administrative	1,121,340
Ministry	62,010
Fund raising and development	96,291
Total expenses	\$ 8,891,577



Thank you for your support.

People with Disabilities

The Great Community Give: Embracing the Hybrid World of Virtual and In-person Services

The pandemic greatly affected the way we provide community-based supports to individuals who have developmental disabilities. We need to continue to reevaluate, adapt, and evolve our service delivery.



Pleasant View is participating in the fourth annual Great Community Give Wednesday, April 21, 2021 from 6:30 AM to 8 PM, an initiative of the Community Foundation. Participating in the Great Community Give (GCG) is another way to share our mission within the community.

You can help by helping us reach our goal of raising \$25,000 during the GCG. Supporting our efforts will help us to **“Embrace Our World of Virtual and In-person Services.”** You can help us share our need and mission with a broader audience of caring community members with an interest in philanthropy. On the days leading up to and during the GCG, we plan to broadcast Facebook Live interviews, post pre-recorded videos, and share pictures.

Pleasant View is attempting to win the “Brunch Time Prize” for Greatest Number of Donors donating between the hours of 11AM and 12 Noon this year.

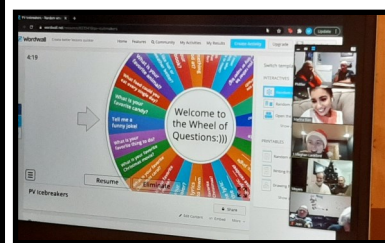
You can contribute any time during the Great Community Give event, but if you donate to Pleasant View between the hours of 11:00 AM and 12 Noon, you can help us win the “Brunch Power Hour” prize. Multiple gifts from the same person during this time, count as one gift. Donate as little as \$10 to increase our chance of receiving additional prizes. Our first year, we won a “Golden Ticket” prize and received an additional \$1,500. “Golden Tickets” are drawn at random throughout the day. Any donor can be responsible for directing this sizable gift to your favorite nonprofit. Last year, we raised \$19,883. This year, our goal is to raise \$25,000 to further our mission.

If you want to be a peer-to-peer fundraiser for Pleasant View, you can email pmiller@pleasantviewinc.org or go to donate.greatcommunitygive.org/organizations/pleasant-view-inc. Please help spread the word by telling your friends and family.

Thank you for your support! •

In December, students from Kendal Swartzentruber’s class at JMU

provided a Zoom Christmas party for Pleasant View. Each residential program signed-in to the event for activities such as Christmas Jeopardy, Christmas Caroling, and Icebreaker: Wheel of Questions. Students delivered craft supplies and snacks to be enjoyed during the party. We finished the night watching Frosty the Snowman



together. We have also been blessed by virtual activities with JMU Best Buddies. These activities were enjoyed by all who attended.

Thank you! •

(Banquet Continued) with the banquet on our YouTube channel. This banquet venue expanded our reach from a 4 year average attendance of 157 by 204 individual views. Thank you for giving it a try.



Some highlights include:

- Donna Click, shared stories of important people, memories, and accomplishments in her 26 years at Pleasant View in various residential and day support roles.
- Scripture was shared with attendees by several individuals we support, with help from their support staff when needed.
- James Labarge gave a brief history of Pleasant View. (John R. Mumaw, one of our founders, right)
- Dave Gullman prepared a tribute to our worship team, then and now. The tribute featured a sing-a-long option accompanied by Phyllis Cowger, one of the founders of the worship team.
- Nancy Hopkins-Garriss addressed our attendees with gratitude for past support. She closed with, “The best is yet to come.” **Thanks again for your Support! •**



UPCOMING EVENTS

Keep up to date with Pleasant View, Inc. activities on our website: www.pleasantviewinc.org or our Facebook page @pleasantviewinc.

Great Community Give Wednesday, April 21, 2021 from 6:30 AM to 8 PM. All of our online donation buttons on Facebook and website will be rerouted to the Pleasant View Great Community Give Profile. **You can also go to** <https://donate.greatcommunitygive.org/organizations/pleasant-view-inc>



Pleasant View, Inc.'s 50th Anniversary Celebrations:
Our focus for 50th Anniversary Celebrations will include:

March-April: Grateful for the Past

- Developmental Disability Awareness Month
- Social Media posts with newspaper clippings, letters, and etc. recognizing our founders

May-July: Celebrating the Present

- 50 statements from 50 supporters
- Golf Tournament

August-October: Anticipating the Future

- 50 hand-painted tiles for 50 years
- 50th Anniversary Grande Finale at Fall Banquet



Coming Soon: Look in your mailboxes for a postcard listing all our events!



Pleasant View's 24th Annual Charity Golf Tournament Friday, May 21, 2021 at Spotswood Country Club



<http://pleasantviewinc.org/newsevents.html>

Help individuals who have intellectual disabilities achieve more.

In May of 1998, Pleasant View, Inc. held our first charity golf tournament. **Since then, through the generosity of our sponsors and golfers, over \$397,968.00 has been raised to help Pleasant View provide day and residential support for individuals with intellectual disabilities!** Last year we raised over \$21,500.00.

Gather your teams, register early, and prepare to have fun.

- Format: Captain's Choice
- Registration begins at 8:00 AM, with a shotgun start at 9:10 AM.
- Please register by May 10, 2021 either online registration through PayPal \$118/golfer or \$450/team of 4. (see above link) **OR avoid fees** by paying by check. (\$115/golfer or \$440/team)
- Team Prizes will be awarded for 1st, 2nd and 3rd Place Teams. Mulligans, Power balls, and 50/50 will be offered at registration. We will have closest to the pin and longest drive contests.
- Lunch will be provided starting at 1:00 PM. Team prizes, contest prizes, and several door prize drawings will be awarded after lunch.

Sponsorships Available:

Contact Pam Miller at (540) 560-1134 or pmiller@pleasantviewinc.org for sponsorship opportunities for more info.

Non-Profit Org.
U.S. Postage
Paid
New Market, VA 22844
Permit #7

P.O. Box 426, Broadway, VA 22815
(540) 896-8255

