



Pleasant Views

Pleasant View, Inc. 2019 Annual Report Edition

Letter from the President of Pleasant View's Board of Directors:

In Fiscal Year (FY) 2019, Pleasant View, Inc. continued evaluating our current facilities and exploring ways to upgrade. We keep evolving our day and residential programs as we live out our vision, mission and values. The service location task force continues its work gathering input from supporters, community businesses, and civic organizations as we plan for our future facility needs. We continue to improve our quality assurance program. This past year, PVI approved necessary technology upgrades in order to remain HIPAA compliant and to provide better, more informed care.

We are mindful that we impact the lives of individuals who have disabilities. Pleasant View is a strong organization that strives to enhance the quality of individuals while strategizing for the development of necessary services for people with intellectual disabilities. We take seriously our commitment to care for and support each individual's efforts to live meaningfully in and enrich his or her community.



Sincerely,
Elroy Miller
President, Pleasant View Inc. Board of Directors

Mission: Pleasant View supports individuals who have disabilities in living out their goals for meaningful work, relationships, and spiritual development.

Vision: All people will have the opportunity to live in and enrich their communities.

Banquet blessed by Community Connections

On Saturday, November 16, 2019 Community Connections program participants provided a glimpse into their active days and welcomed us into their teams

to show the importance of their community work and relationships. Karen Howe, one of the longtime Community Connections (CC) participants, shared stories about her work delivering Meals on Wheels. She later said she "loved to talk

to the people about what we do in CC." David Swartzendruber, Worship Team Member, played the bells. He, like others who were part of the program, enjoyed sharing a meal with family and friends. As part of their program, the Worship Team (Banquet page 3)



Pleasant View's Fall Adventures

This fall was a time of adventure for many of the individuals we support. Several small groups met up at the **Baltimore Aquarium** to enjoy the day with dolphins and jellyfish. ●



Lee High Residence held a mortgage burning party December 1, 2019. We had fun looking at pictures together. Joann Henderson and Natalie Cave, Nancy Hopkins-Garriss, Joy Moore, and Stephanie Biller shared stories from the early days to present. ●

Celebrating 49 Years Supporting

Balance Sheets

Year Ended June 30, 2019

Assets

Current Assets

Cash and cash equivalents	\$ 3,341,963
Accounts receivable	1,159,867
Prepaid expenses	34,708
Total Current Assets	\$ 4,536,538

Fixed Assets (Property & Equipment)

Vehicles	\$ 1,042,544
Appliances, furniture and fixtures	762,834
Tools and outside equipment	36,564
Land, building and improvements	6,946,710
Total Fixed Assets	\$ 8,788,652

Less: Accumulated depreciation \$ 4,845,340

Total Fixed Assets **\$ 3,943,312**

Other Assets

Investments	\$ 3,114,294
Escrow accounts	59,219
Other	58,325
Total Other Assets	\$ 3,231,838

Total Assets **\$ 11,711,688**

Liabilities and Net Assets

Current Liabilities

Current portion of long-term debt	\$ 217,178
Accounts payable	109,230
Accrued wages	484,061
Payroll taxes payable	20,867
Other current liabilities	118,334
Total Current Liabilities	\$ 949,670

Long Term Debt

Notes payable net of current portion \$ 325,731

Total Liabilities **\$ 1,275,401**

Net Assets

Without donor restrictions	\$ 9,681,279
With donor restrictions	755,008
Total Net Assets	\$ 10,436,287

Total Liabilities and Net Assets **\$ 11,711,688**

FINANCIAL SUMMARY

Statement of Support & Revenue and Expenses

Year Ended June 30, 2019

Support and Revenue w/out Donor Restrictions

Fees - Medicaid Waiver	\$ 6,498,539
Fees - Title XIX	1,848,420
Client entitlement and fees	558,520
Contributions	267,242
Rental Income	212,525
Investment Income	125,660
Estate Gifts	26,973
Net assets released from restrictions	13,953
Other Income	39,382
Total Support and Revenue	\$ 9,591,214

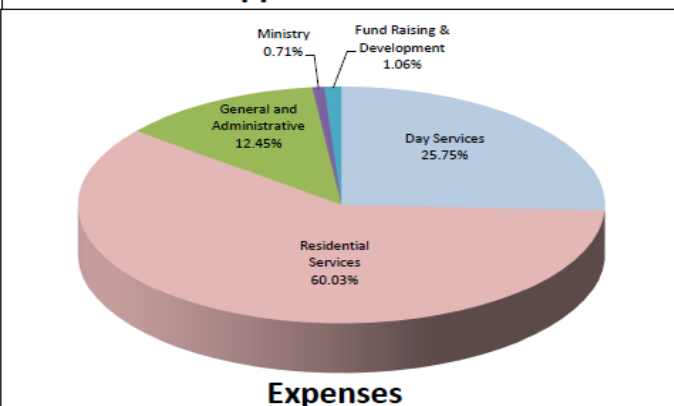
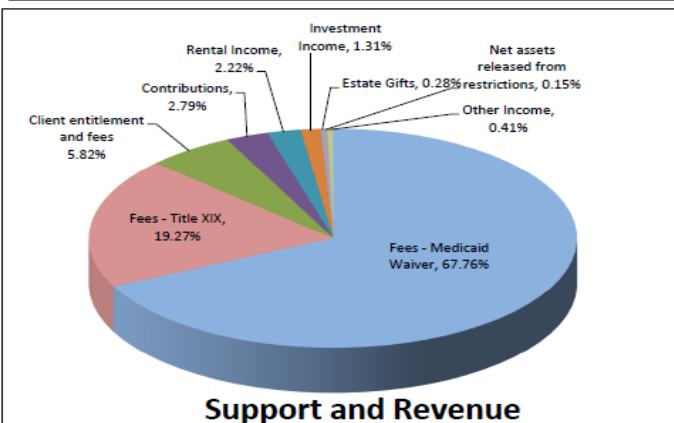
Expenses

Day Services	\$ 2,295,836
Residential Services	5,351,853
General and Administrative	1,110,114
Ministry	63,219
Fund Raising & Development	94,184
Total Expenses	\$ 8,915,206

Change in Net Assets w/out Donor Restrictions \$ 676,008

Net Assets of Beginning of Year \$ 9,733,991

Net Assets at End of Year **\$ 10,409,999**



Thank you for your support.

People with Disabilities

The Great Community Give: A Great Opportunity

Pleasant View is excited to participate in the third annual Great Community Give Wednesday April 22, 2020 from 6:30 AM to 8 PM, an initiative of the Community Foundation. Participating in the Great Community Give is another way to share our mission within the community.



We encourage you to help us expose a broader audience of caring community members with an interest in philanthropy to Pleasant View's mission. Pleasant View staff members and the individuals we support work together to help promote the giving day. Aktion Club members and Community Connections teams help decorate Pleasant View vehicles to promote the giving day and thank the community. As in past years, we also have JMU students help us spread the word and encourage their friends and contacts to support Pleasant View. We plan to broadcast Facebook Live streaming interviews, post videos, and share pictures throughout the days leading up to and on the giving day.

Pleasant View is attempting to win the "Brunch Time Prize" for Greatest Number of Donors donating between the hours of 11AM and 12 Noon this year.

You can contribute any time during the Great Community Give event, but if you donate to Pleasant View between the hours of 11:00 AM and 12 Noon you can help us win the "Brunch Power Hour" prize. You can donate as little as \$10 to increase our chance to win additional prize money. Multiple gifts from the same person only count as one gift. Two years ago we won the "Power Hour" prize and received an additional \$1,500. Last year, we started the day with a goal to raise \$5,000. We ended the day with a net of \$8,500. This year our goal is to raise \$10,000 to further our mission.

If you want to be a peer-to-peer fundraiser for Pleasant View you can email pmiller@pleasantviewinc.org or go to donate.greatcommunitygive.org/organizations/pleasant-view-inc Other Greatest Number of Donors "Power Hours" are between 7AM-8AM, 1PM-2PM, and 5PM-6PM. Please help spread the word by telling your friends and family.

Thank you for your support! •



In November, students from JMU planned and promoted a game night to recruit Kiwanis Aktion Club members and volunteers.

During fall semester, the students attended Aktion Club meetings to get to know us and what might entice new members to join. They developed a video explaining Aktion Club which included film footage from our meetings and Backpacks for Hope service project.

At the event, we had fun playing UNO, Dominos, and Connect 4. We enjoyed laughing, snacking, and spending quality time together. **Thank you Lindsey, Rachel, Helen, Christy, and Amanda for spending your time and sharing your expertise with us. •**



(Banquet Continued) led the entire dining room in a few choruses of "Head, Shoulders, Knees, and Toes" which produced lots of smiles and laughs. Wendy Moyers, Community Connections Program Coordinator, "loved that so

many people [in the program] had the opportunity to share and present. There are so many parts and faces of Community Connections, I thought that was well conveyed."

We would like to thank everyone in attendance and those who were there in spirit. This year, your gifts totaled \$10,983. We look forward to seeing you and your friends next year. •



UPCOMING EVENTS

Keep up to date with Pleasant View, Inc. activities on our website: www.pleasantviewinc.org or our Facebook page @pleasantviewinc.

Disability Awareness Rally March 17, 2020 (rain date March 31, 2020) from 5:15 to 5:45 PM on Court Square Harrisonburg, VA. Come join the Aktion Club at the Harrisonburg Day Program for some fun making signs.



Great Community Give Wednesday, April 22, 2020 from 6:30 AM to 8 PM. All online donation buttons on our Facebook page and website will be rerouted to the Pleasant View Great Community Give Profile. **You can also go to** <https://donate.greatcommunitygive.org/organizations/pleasant-view-inc>

Pleasant View's Worship Team will be at Immanuel Mennonite Church on May 31, 2020. Check our website for more details. The Worship Team would love to come to your church. For more information call Dave Gullman at (540) 433-0965 .



Pleasant View, Inc.'s 50th Anniversary Celebrations: Coming Soon.

Pleasant View's 23rd Annual Charity Golf Tournament Friday, May 8, 2020 at Spotswood Country Club



<http://pleasantviewinc.org/newsevents.html>

Help individuals who have intellectual disabilities achieve more.

In May of 1998, Pleasant View, Inc. held our first charity golf tournament. **Since then, through the generosity of our sponsors and golfers, over \$376,468 has been raised to help Pleasant View provide day and residential support for individuals with intellectual disabilities!** Last year we raised over \$36,468. Gather your teams, register early, and prepare to have fun.

- Format: Captain's Choice
- Registration begins at 8:00 AM, with a shotgun start at 9:10 AM.
- Online Registration through PayPal \$118/golfer or \$450/team of 4. Please register by April 23, 2020. Avoid fees by paying by check. (\$115/golfer or \$420/team)
- Team Prizes will be awarded for 1st, 2nd and 3rd Place Teams. Mulligans, Power balls, and 50/50 will be offered at registration. We will have closest to the pin and longest drive contests.
- Chicken BBQ lunch will be provided by Hank's Catering starting at 1:00 PM. Team prizes, contest prizes, and several door prize drawings will be awarded after lunch.

Sponsorships Available: Contact Pam Miller at (540) 560-1134 or pmiller@pleasantviewinc.org for sponsorship opportunities for more info.