

Pleasant Views



Pleasant View, Inc.

2017 Annual Report Edition

Letter from the President of Pleasant View's Board of Directors:

Each year brings us new challenges and opportunities for success. In Fiscal Year 2017, we began the process of increasing the salaries of our dedicated Direct Support Professionals in celebration of an improving economy and to meet our hiring challenges in a time of low unemployment. The board is pleased with all staff members' efforts to transition and make changes required in the redesigned Medicaid Waiver Program for each of the individuals supported by Pleasant View. We are also proud of the work that goes into being awarded our sixth consecutive Three-Year accreditation from the international accrediting body CARF, The Commission on Accreditation of Rehabilitation Facilities.



Pleasant View was the recipient of generous estate gifts this year. One was designated for the Troyer Endowment that can be used by individuals who live at Pleasant View Inc. (PVI) and do not have the funds to pay for dental needs. Medicaid does not cover dental care. The second estate gift was designated by the Board of Directors as a Dream Fund. Each year we request grant applications from employees to propose ideas, resources, or projects that would benefit the individuals supported by Pleasant View Inc.

Thank you, one and all, for the successes of the past year. We remain committed to our mission: to support "...individuals with disabilities achieve their own spiritual, emotional, relational, vocational, and residential goals."



Sincerely,
Elroy Miller
President, Pleasant View Inc. Board of Directors

Providing Opportunities

This year our supporters provided the means for:



Broadway Day Program helps feed kids

- Broadway Day Program participants to go to John C. Myers Elementary School in Broadway to pack 80 bags for children who don't have enough food to eat on the weekend.

• Opportunities for individuals to attend the churches of their choice with the aid of the (Cont. "Opportunities" p3)

We are all Part of the Body of Christ

On February 26, 1987, Ronald Reagan declared March Disability Awareness Month. Each year Pastor Dave Gullman, and Pam Miller, Development Director, create bulletin inserts to make available to churches to raise awareness. This year we talked with Stephanie Sorge Wing, Pastor of Trinity Presbyterian Church, about what it means to have individuals with developmental disabilities included in the church life. (Cont. "Body" p.3)



Glen at church

Spring 2018



Celebrating 47 Years Supporting

FINANCIAL SUMMARY

Balance Sheets

Year Ended June 30, 2017

Assets

Current Assets	
Cash and cash equivalents	2,191,485
Investments	2,987,073
Accounts receivable	896,027
Prepaid expenses	29,178
Escrow accounts	62,927
Total Current Assets	6,166,690

Fixed Assets

Tools and outside equipment	36,564
Vehicles	798,457
Appliances, furniture and fixtures	744,324
Land, building and improvements	6,851,538
	<u>8,430,883</u>

Less: Accumulated depreciation 4,290,402

Total Fixed Assets 4,140,481

Other Assets 58,325

Total Assets 10,365,496

Liabilities and Net Assets

Current Liabilities

Short-term debt	108,565
Accounts payable	109,624
Accrued wages	402,410
Accrued payroll withholdings	19,763
Current portion of long-term debt	215,451
Other current liabilities	57,143
Total Current Liabilities	912,956

Long Term Debt

Notes payable net of current portion 762,062

Total Liabilities 1,675,018

Net Assets

Unrestricted-Undesignated	8,001,964
Temporarily restricted	345,037
Permanently restricted	343,477

Total Net Assets 8,690,478

Total Liabilities and Net Assets 10,365,496

Statement of Revenues & Expenses

Year Ended June 30, 2017

Support and Revenue

Commonwealth of Virginia Funds	77,835
Estate Gifts	907,580
Contributions	223,384
Client entitlement and fees	509,715
Fees - Title XIX	1,782,392
Fees - Medicaid Waiver	6,545,104
Rental Income	214,984
Investment Income	216,383
Total Support and Revenue	10,477,377

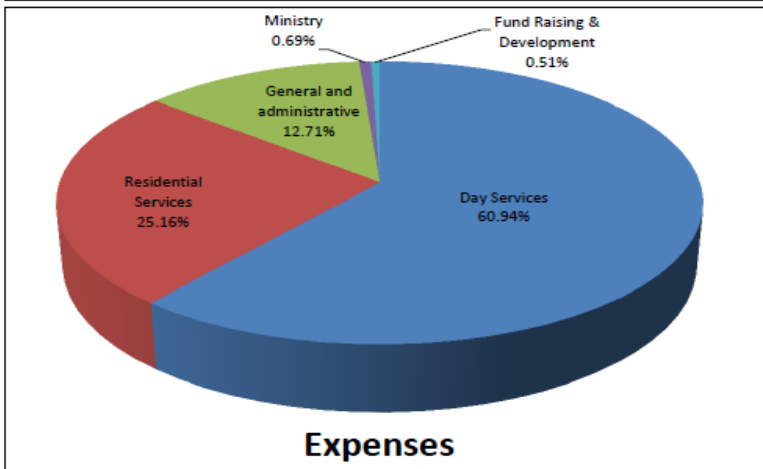
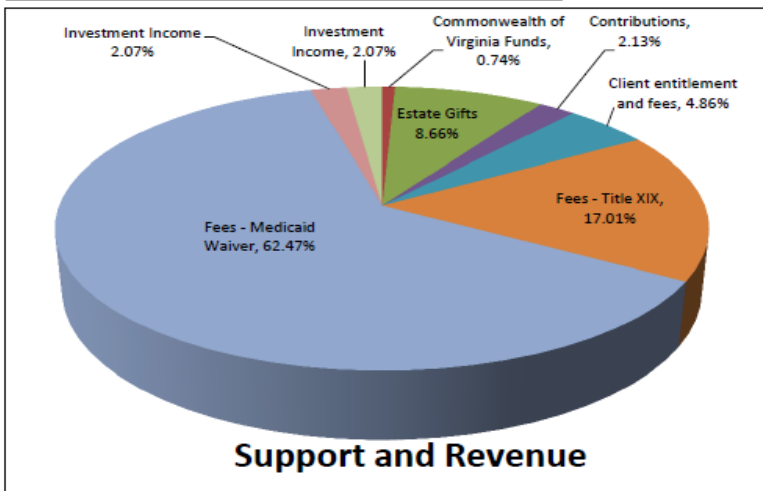
Expenses

Day Services	5,059,971
Residential Services	2,089,448
General and administrative	1,055,018
Ministry	57,072
Fund Raising & Development	42,119
Total Expenses	8,303,628

Changes in Net Assets 2,309,577

Net Assets of Beginning of Year 6,380,901

Net Assets at End of Year 8,690,478



Thank-you for your support.

People with Disabilities



(“Body” Cont.)

Reverend Stephanie Sorge Wing said, “We are the body of Christ, and this body wouldn’t be complete without Joanie and Glenn and others who have enriched our worship and community of faith. Glenn’s enthusiasm is contagious, and

Joanie never forgets a birthday greeting. They offer their gifts joyfully and full of love for God. I am so grateful that they are part of this body!” Palm Sunday this year Joanie and Glenn joined Nancy Hopkins-Garriss as lay participants in leading the service.



In preparing our annual, *March is Disability Awareness Month* bulletin insert, Pastor Dave Gullman found this quote from Henri Nouwen that we will leave you with, “The question is not how can we help people with disabilities, but a more important question is, how can people with disabilities give their spiritual gifts to us and call us to love?” ●

You may find past bulletin inserts on the Spiritual Support Services page at www.pleasantviewinc.org

(“Opportunities” Cont.)

Direct Support Professionals (DSPs) with whom they work.

- Worship Team, in which members grow: musically, in their relationship with others and in their relationship with God.



- Celebrate the birth of Christ and liturgical events with friends and community members at monthly Faith & Light meetings in Harrisonburg and Broadway.

- Participate in dance classes with JMU students, community members, and perform in 2 recitals.



- Explore employment opportunities, apply for jobs in the community, and work with the assistance of a job coach.

- Go on fun trips in and out of state. Meet interesting people.



- Homes in which caring Direct Support Professionals make getting ready in the mornings enjoyable.

Thank you for all the opportunities you provide individuals at Pleasant View to enable a full life. ●

Faith and Light

AN INTERNATIONAL CHRISTIAN ASSOCIATION WITH INTELLECTUALLY DISABLED PEOPLE, THEIR PARENTS, AND FRIENDS



www.pleasantviewinc.org/newsevents.html

or
Facebook Events:
www.facebook.com/pleasantviewinc

Published Quarterly

Printing: Branner Printing
Executive Director: Nancy Hopkins-Garriss

Editor: Pamela L. Miller
Consultants: Leadership Team



Yard Sale to Benefit Pleasant View, Inc.

at the Belmont Yard Sale
May 5, 2018 from 7:00 am to 2:00 pm.
at 3135 Old Thirty-Three Rd

All proceeds will go to Pleasant View, Inc.'s Annual Fund. Please come out and support us.

To volunteer to help with the yard sale or to donate items, please contact Pam Miller, Pleasant View Development Director, at (540)-560-1134/(540)-896-8101 or email her at pmiller@pleasantviewinc.org

UPCOMING EVENTS

Keep up to date with Pleasant View, Inc. activities on our website: www.pleasantviewinc.org or our Facebook Events: <https://www.facebook.com/pleasantviewinc/events>.

- Pleasant View's **Annual Pork BBQ** will be held on a Saturday in September 2018 (Date TBA)
- **Annual Fall Banquet** November (Date TBA)

All events are on our Pleasant View, Inc. Facebook page and <http://pleasantviewinc.org/newsevents.html>

21st Annual Golf Event Friday, May 4, 2018 at Spotswood Country Club



<http://pleasantviewinc.org/newsevents.html>

Help individuals with intellectual disabilities achieve more.

In May of 1998, Pleasant View, Inc. held our first charity golf tournament. Since then, through the generosity of our sponsors and golfers, over \$320,000 has been raised to help Pleasant View provide day and residential support for individuals with intellectual disabilities. **Last year we raised over \$20,000.** Gather your teams, register early, and prepare to have fun.

- Format: Captain's Choice
- Registration begins at 8:00 AM, with a shotgun start at 9:10 AM.
- Online Registration through PayPal or mail in \$103/golfer, or \$389/team
- Team Prizes for 1st, 2nd and 3rd Place Teams. Mulligans, Power balls, and 50/50 will be offered at registration. We will have closest to the pin and longest drive contests.
- Lunch will be provided starting at 1:00 PM. Team prizes, contest prizes, and door prize drawings will be awarded after lunch.

Contact Pam Miller at 540-896-8101 or pmiller@pleasantviewinc.org for sponsorship opportunities or for more information.

Non-Profit Org.
U.S. Postage
Paid
New Market, VA 22844
Permit #7

P.O. Box 426, Broadway, VA 22815
(540) 896-8255

