

# Pleasant Views

## Pleasant View, Inc. 2015 Annual Report Edition



### A Welcome Sign That Spring is on the Way

A promise of Spring came to the Broadway Day Program in the form of a visitor. Maretta Crider, Program Coordinator at the Broadway Day Program, treated everyone with a visit from one of her lambs.

Maretta made sure to bring a lamb that was still bottle fed so that anyone who wanted to feed it, could. There were lots of smiles, giggles and questions as the morning pressed on. Here are a few pictures from that morning. ★



### Pleasant View: Supporting Dreams

Donna Click is the Program Coordinator of the In-Home Services and Supported Employment Programs under the supervision of Peggy Secrist, Day Support Services Director. Both programs are community based, therefore the services are provided in the community and not a specific building. These programs are not limited by space, but they are limited by funding. Over the last several years, Donna and Peggy worked together with their flexible employees (Job Coaches/Direct Support Professionals) to figure out ways to support more individuals in achieving their employment goals.

One of the nine new individuals receiving Supported Employment services from Pleasant View is April. April said that she made employment a goal for this year. She had worked many years ago in Northern Virginia, but since moving to Harrisonburg she has not pursued employment.

April's job coach, Marlana King, started out by helping her figure out what type of job she wanted. Marlana helped April fill out an online application for Wendy's. To make sure she could do the job and to see what types of assistance she would need, April then completed a job situational assessment. After completing the situational assessment at Wendy's, the manager was so impressed she hired her on the spot.

April is now a proud employee of Wendy's. She said she received training, during orientation, on food safety and hygiene. She also was trained on her job responsibilities. When asked if she likes her new job, April is quick to reply with a smile and a, "Yes." ★



## Spring 2016



# Celebrating 45 Years Supporting

## Balance Sheets Year Ended June 30, 2015

Assets	
<b>Current Assets</b>	
Cash and cash equivalents	\$ 640,075
Investments	1,732,166
Accounts receivable	868,132
Prepaid expenses	33,691
Escrow accounts	59,969
<b>Total Current Assets</b>	<b>\$ 3,334,033</b>
<b>Fixed Assets</b>	
Tools and outside equipment	\$ 36,564
Vehicles	891,759
Appliances, furniture and fixtures	802,672
Land, building and improvements	6,476,293
	\$ 8,207,288
Less: Accumulated depreciation	4,062,378
<b>Total Fixed Assets</b>	<b>\$ 4,144,910</b>

Other Assets	
Loan costs	\$ 37,421
	\$ 37,421
<b>Total Assets</b>	<b>\$ 7,516,364</b>

Liabilities and Net Assets	
<b>Current Liabilities</b>	
Accounts payable	\$ 104,365
Accrued wages	354,711
Accrued payroll withholdings	5,619
Current portion of long-term debt	193,923
Short Term Debt	250,864
Other current liabilities	32,979
<b>Total Current Liabilities</b>	<b>\$ 942,461</b>
<b>Long Term Debt</b>	
Notes payable net of current portion	\$ 960,595
<b>Total Liabilities</b>	<b>\$ 1,903,056</b>

Net Assets	
Unrestricted-Undesignated	\$ 5,094,542
Temporarily restricted	313,356
Permanently restricted	205,410
<b>Total Net Assets</b>	<b>\$ 5,613,308</b>

<b>Total Liabilities and Net Assets</b>	<b>\$ 7,516,364</b>
---	---------------------

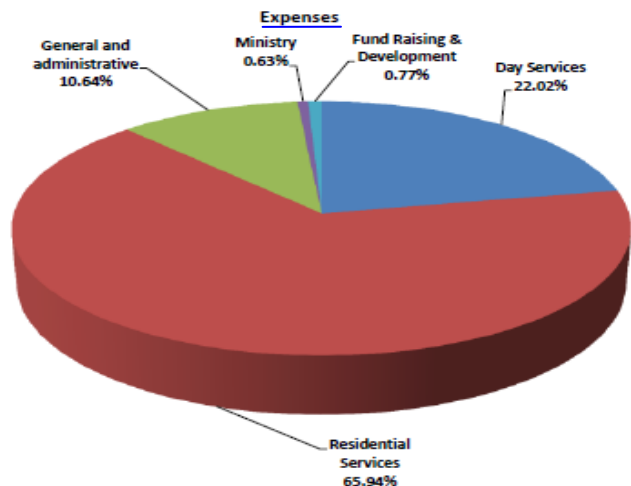
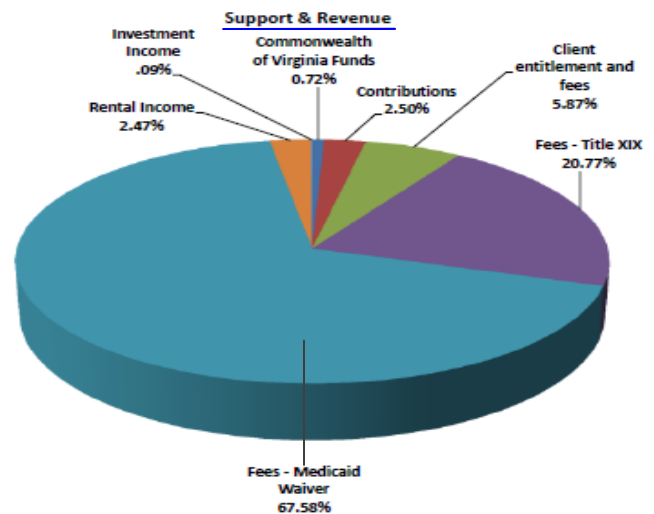
## Financial Summary

### Statement of Revenues & Expenses Year Ended June 30, 2015

Support and Revenue	
Commonwealth of Virginia Funds	\$ 63,360
Contributions	220,884
Client entitlement and fees	518,888
Fees - Title XIX	1,834,638
Fees - Medicaid Waiver	5,968,548
Rental Income	218,239
Investment Income	7,536
<b>Total Support and Revenue</b>	<b>\$ 8,832,093</b>

Expenses	
Day Services	\$ 1,860,834
Residential Services	5,573,520
General and administrative	899,845
Ministry	52,941
Fund Raising & Development	65,423
<b>Total Expenses</b>	<b>\$ 8,452,563</b>

Changes in Net Assets	\$ 379,463
Net Assets of Beginning of Year	\$ 5,233,845
<b>Net Assets at End of Year</b>	<b>\$ 5,613,308</b>



Thank-you for your support.

# People with Disabilities

## UPCOMING EVENTS



The Pleasant View Inc.  
**19th Annual Golf Event**  
will be held on  
May 13, 2016 at the  
Spotswood Country Club.

SHOTGUN START AT 9:10 AM,  
HOT LUNCH PROVIDED  
DOOR PRIZES, AWARDS,  
AND FUN!

Money raised goes toward supporting  
individuals with intellectual disabilities

Call Pam (540) 896-8101  
or John (540) 896-8006  
to make reservations today!



## Yard Sale to Benefit Pleasant View, Inc.

at the Belmont Yard Sale  
May 7, 2016 from 7:00 am to 2:00 pm.  
at 3135 Old Thirty-Three Rd

All proceeds will go to Pleasant View, Inc.'s  
Annual Fund. Please come out and support us.

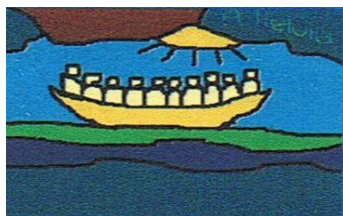
To volunteer to help with the yard sale or to donate items,  
please contact Pam Miller, Pleasant View Development  
Director, at 540-560-1134 or email her at  
[pmiller@pleasantviewinc.org](mailto:pmiller@pleasantviewinc.org)

## Faith and Light

AN INTERNATIONAL  
CHRISTIAN  
ASSOCIATION WITH  
INTELLECTUALLY  
DISABLED PEOPLE,  
THEIR PARENTS, AND  
FRIENDS

Check for times and dates on  
Pleasant View's calendar:

[www.pleasantviewinc.org/  
newsevents.html](http://www.pleasantviewinc.org/newsevents.html)  
or Facebook Events:  
[www.facebook.com/  
pleasantviewinc](http://www.facebook.com/pleasantviewinc)



## Another Goodbye

Dave Gullman

In January we said yet another goodbye to a longtime resident of Pleasant View. Helen was born on June 22, 1938 and died at Gehman House on January 7, 2016. Helen had lived at Pleasant View 40 of her 77 years and was certainly a significant member of our Pleasant View Community. She first moved into Turner House in 1975 following her friend, Joanne Rixey, who had come a few months earlier. She then moved to Harrison House when it opened. After some time at Harrison, Helen decided that it was time for her to retire and she initiated Pleasant View's move toward opening Gehman House, one of the first retirement homes for people with disabilities in the state of Virginia.

Life was not always easy for Helen. She had her share of hard times in this life. God walked with her and those experiences did not overwhelm her. The hard trials that came helped make her stronger. Up to the end she was able to live with a profound sense

of dignity and contentment. This strength of character prompted me to consider Helen to be someone who lived out the beatitude found in Matthew 5:6, "They are blessed who hunger and thirst after justice, for they will be satisfied." Most translations use the word righteousness instead of justice but both words are accurate translations of the Greek. Helen, I am sure had a deep hunger and thirst for justice. She wanted to live in a world where the strong could never take advantage of the weak. She wanted to live securely away from the fear of being oppressed by another. She had a profound sense of self, an understanding of her dignity and she wanted to be treated with respect. God has satisfied her longing for justice, dignity and respect and God has given her a place among the blessed. ●



*Published Quarterly*

Printing: Branner Printing  
Executive Director: Nancy Hopkins-Garriss

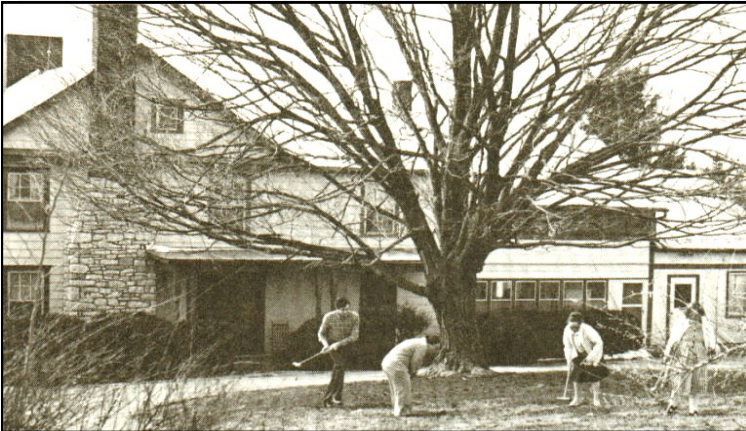
Editor: Pamela L. Miller  
Consultants: Leadership Team

# Pleasant View Anniversary Party

Celebrating 45 Years of Supporting Individuals with  
Intellectual Disabilities

Pleasant View invites you to help us celebrate our 45  
Year Anniversary **Saturday May 21, 2016** from **1pm to  
5pm** at our Regional Center 14881 Spar Mine Road  
Timberville, VA 22853. We will have music, snacks,

games, displays of each of  
our eleven residential and  
day support programs with  
representatives ready to  
answer any questions you  
may have as well as photo  
albums from past  
celebrations. You will also  
have the opportunity to tour  
our first residential



program, Turner House, and the Broadway Day  
Program, our original facility based day support. Keep  
up to date with our anniversary celebrations this year at  
our website: [www.pleasantviewinc.org](http://www.pleasantviewinc.org) or our Facebook  
Events: [https://www.facebook.com/pleasantviewinc/  
events](https://www.facebook.com/pleasantviewinc/events).



- **Broadway Day Program Plant & Craft Sale**  
Friday April 29, 2016 from 10:30 to 2pm. Come for  
lunch.
- Pleasant View's **Annual Pork BBQ** will be held at  
the Harrisonburg Day Support Services building  
Saturday September 17, 2016 from 4pm to 7pm.
- **Mosaic**: A Mosaic of Music – Concert to benefit  
Pleasant View in Celebration of their 45th  
Anniversary. The concert will be held at the Park  
View Mennonite Church Sunday October 2, 2016 at  
3pm.
- **Annual Fall Banquet** November (Date TBA)

All events are on our Pleasant View, Inc. Facebook  
page and <http://pleasantviewinc.org/newsevents.html>

Non-Profit Org.  
U.S. Postage  
Paid  
New Market, VA 22844  
Permit #7

P.O. Box 426, Broadway, VA 22815  
(540) 896-8255

